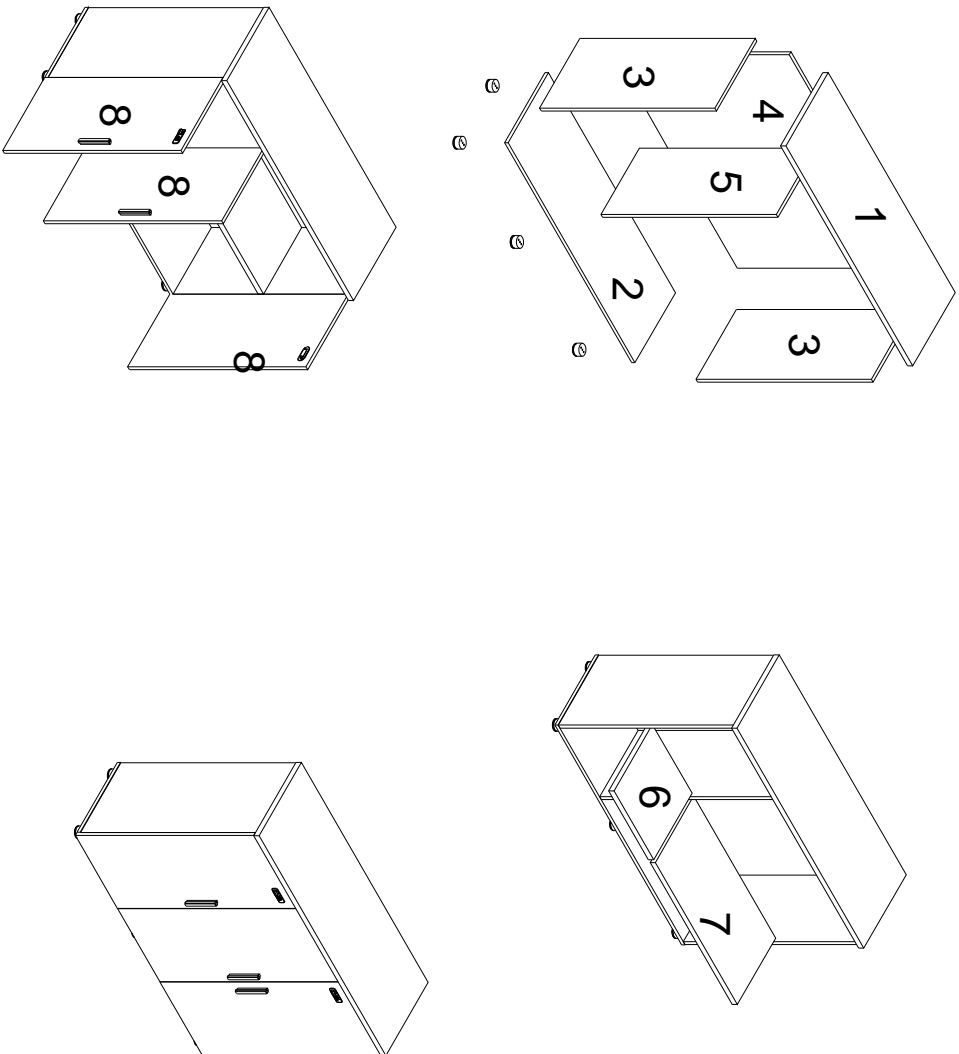
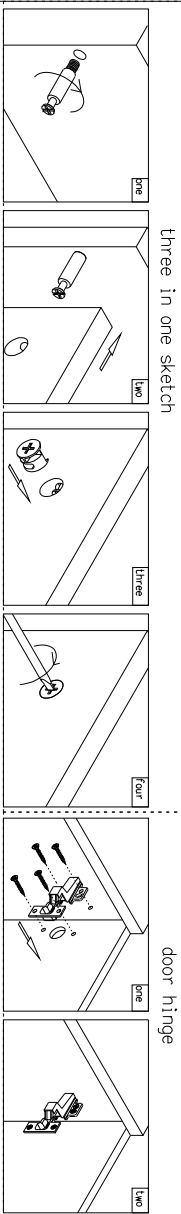


INSTALL DRAWING



Important: Follow steps on order. Requires 2 people to complete assembly

| CREDENZA 120 | | Installation tool | |
|------------------|-------------|-----------------------|-------------|
| 1. 1200x500x25=1 | | Installs the hardware | |
| No. | Accessories | No. | Accessories |
| 2. 1200x481x16=1 | | S1 | |
| 3. 829x480x16=2 | | S2 | |
| 4. 1166x829x16=1 | | S3 | |
| 5. 829x461x16=1 | | S4 | |
| 6. 374x461x25=1 | | S5 | |
| 7. 774x461x25=1 | | S6 | |
| 8. 843x398x16=3 | | S7 | |
| | | S8 | |
| | | S9 | |
| | | S10 | |
| | | S11 | |
| | | S12 | |
| | | S13 | |
| | | S14 | |
| | | S15 | |
| | | S16 | |
| | | S17 | |
| | | S18 | |

